



G-Ext[®]
Exterior Decorative Panels



www.g-ext.com.tr

EBC Panels
G-Uv+ Panels





Endless possibilities...

G-Ext® exterior decorative panels brings compelling aesthetic and nearly limitless design possibilities to next-generation architectural claddings. With its smooth, seamless and non-porous surface, G-Ext® decorative panels are easy to clean and it takes longer for to accumulate dirt and thus they are easy to maintain.

With durability, longevity and safety

G-Ext® panels are very durable and resistant to mechanical or physical stress such as bending, impact, cracking and scratching without losing its ability to be easily processed with sizing, drilling and engraving tools. In addition, G-Ext® is highly durable to environmental exposure, such as



Water
Repellant



Easy To
Clean



Dry Heat
Resistance



Heat & Cold
Resistance



Low Light
Reflectivity



Chemical
Resistance



Scratch & Abrasion
Resistance



Impact
Resistance



Ultra Color
Intensity



GENTAŞ ENVIRONMENTAL DECLARATION

GENTAŞ OPERATIONAL MEASURES FOR IMPROVEMENT OF ENVIRONMENTAL PERFORMANCES

The production process of "GENTAŞ" laminates has been adapted to the environment thematic.

New and strict regulations had been adopted to ensure a continuous improvement of the environmental performances.

The purity of the air and of the water is being efficiently protected in the production department area.

All the gases from the impregnation and pressing machinery are absorbed and eliminated in a special steam boiler. This important process is controlled by our Technical Manager and supervised by government authorities.

The residues resulting from the production are efficiently treated in the factory area.

As another part of GENTAŞ care for the environment, all the raw material used far the production of the laminates are purchased only from suppliers

sunlight, heat, moisture and other atmospheric chemicals which ensures structural integrity and color stability.

When required, G-Ext® panels can be produced with enhanced fire retardant and fire resistant capabilities. When encountered with fire, the material does not enflame easily and no melting, burning droplets, explosion, or toxic gas emissions happens during fire exposure.

Without compromise on health and environment. None of our surface materials contain highly toxic substances such as asbestos and chlorine and all production is highly regulated and constantly audited in order to maintain accordance to most current European regulations on emissions.

who are in environmental performances needed. possession of ISO 9002 and Kraft papers only from FSC certificated producers. Our Kraft paper contains an important percentage of recycled paper (around 20%) and our decorative papers do not contain any of the following materials:

- Cadmium
- Chrome Hexavalent
- Lead
- Mercury
- Polybrominated Biphenils (PBB)
- Polybrominated Diphenylether (PBDE)

No efforts will be spared by GENTAŞ to continue the implementation of all the necessary actions to achieve the best

We are a Fsc certified laminate producer.

We added respect to the nature to the quality of our products. FSC had certified that our laminate products has been manufactured from the sustainable managed resources and submitted far your use.

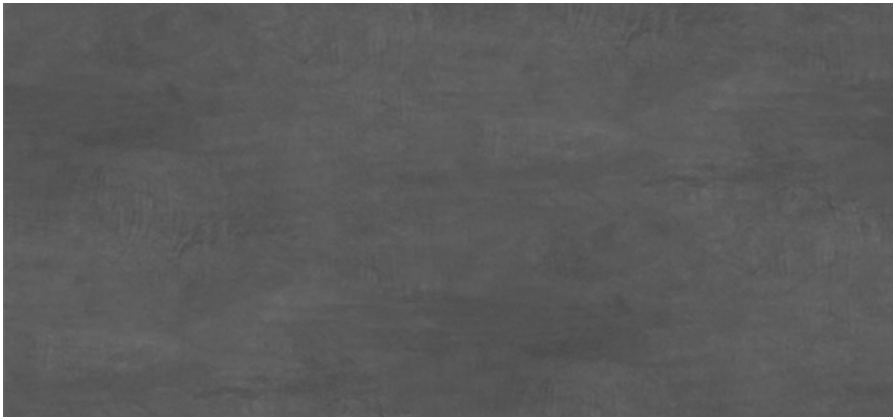
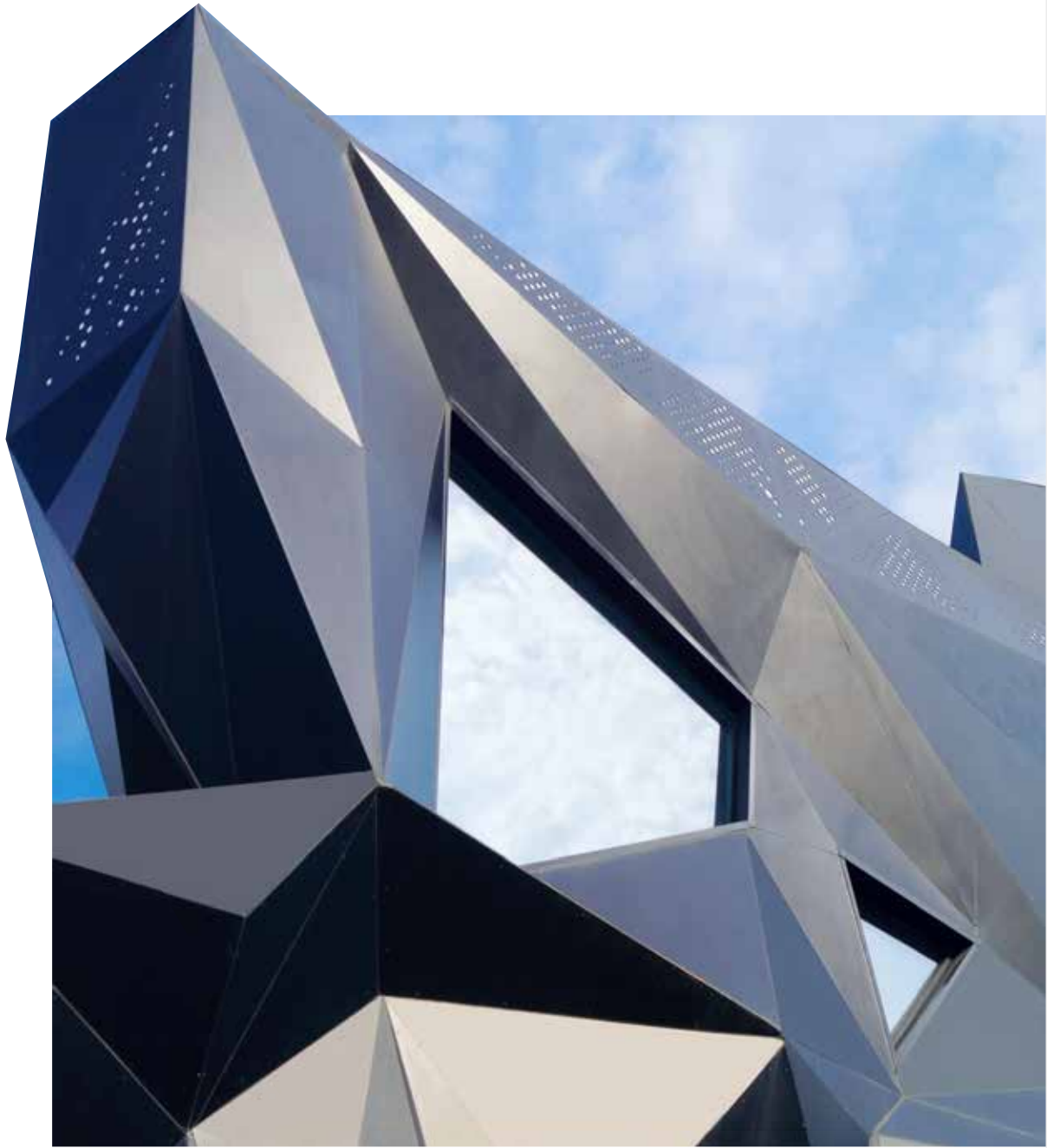


EBC PANELS

G-Ext EBC exterior decorative panels are produced by pressing impregnated kraft papers together with decorative papers which are EBC (Electron Beam Curing) treated.

G-Ext EBC panels are suitable for horizontal and vertical usage

WOOD / NATURAL STONE & CONCRETE



25687



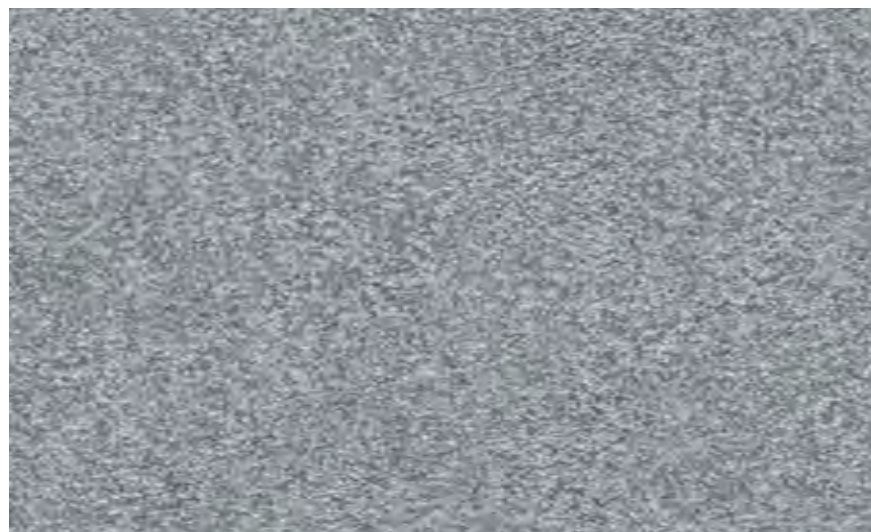
25685



25686



25689



25690



25683



24659



24658

Size: 1300x2800mm / 1300x3050mm



24531

Size: 1300x2800mm / 1300x3050mm



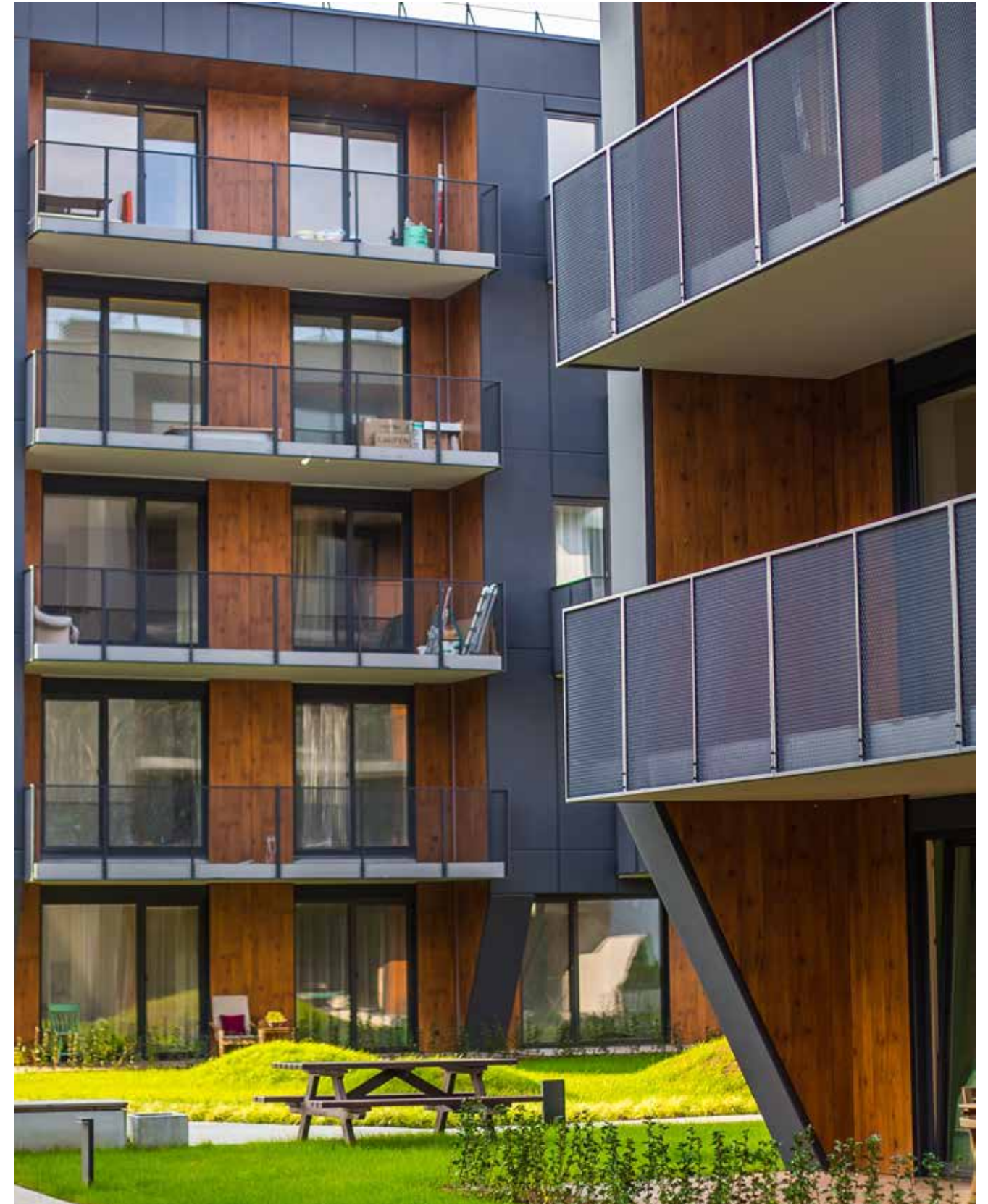
24533



24535



24534

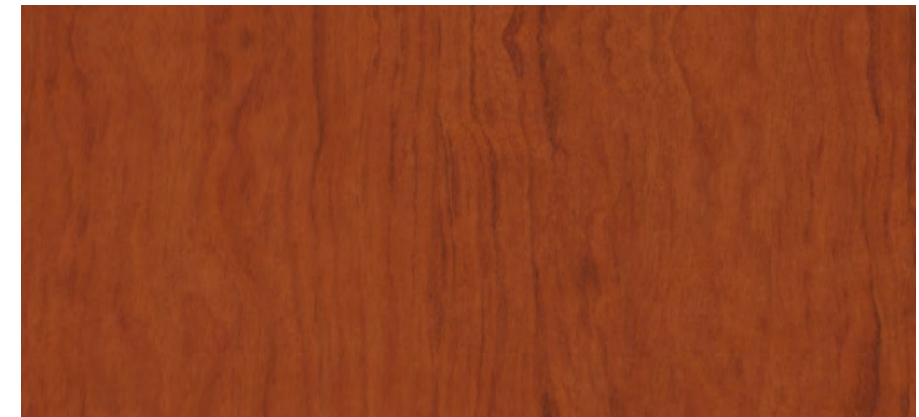




24530



24532



24390



24391



24392



25629



25630



25678



24389



25628



24290



24292



24279



24248



24241



24657



24399



24525

Size: 1300x2800mm / 1300x3050mm

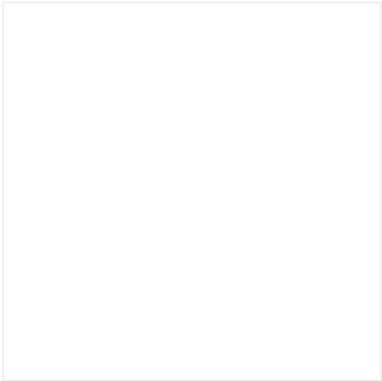


G-Uv+ PANELS

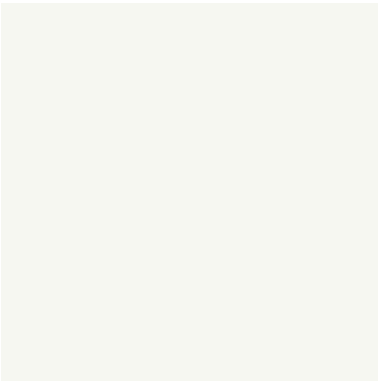
G-Ext UV+ exterior decorative compact panels produced with HPL production technique. The surface layer of the G-Ext UV+ compact panels has been specially treating and extra reinforcing.

G-Ext UV+ panels are suitable for vertical usage

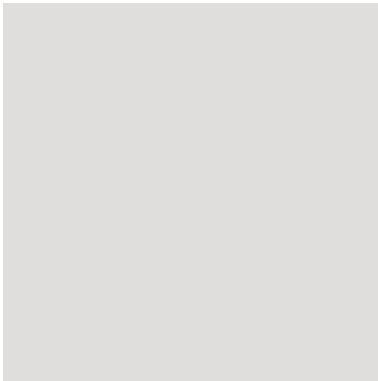
PLAIN COLOR
WOOD
NATURAL STONE & CONCRETE



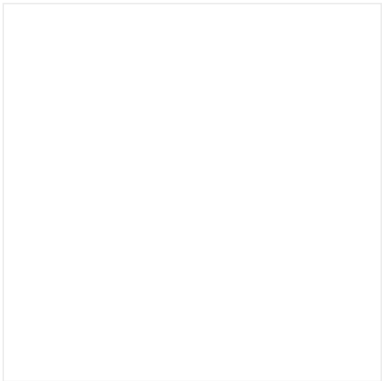
3097 Available as 1860x4200 mm



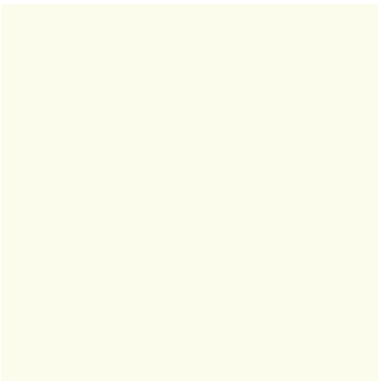
3096



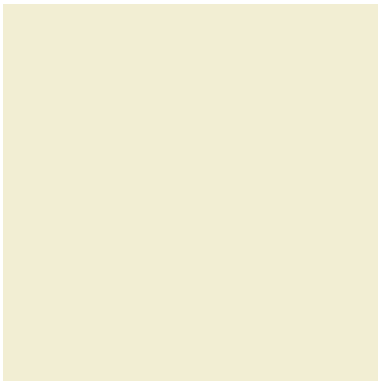
3150



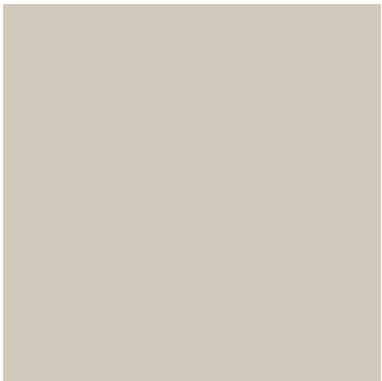
3103 Available as 1860x4200 mm



3195



3106 Available as 1860x4200 mm



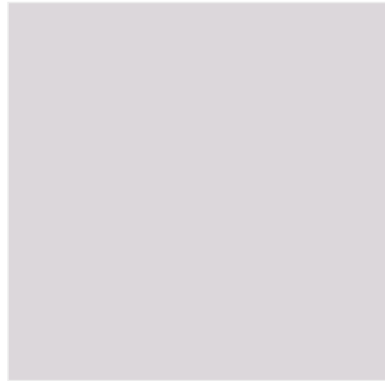
3151 Available as 1860x4200 mm



3105 Available as 1860x4200 mm



3107 Available as 1860x4200 mm



3153

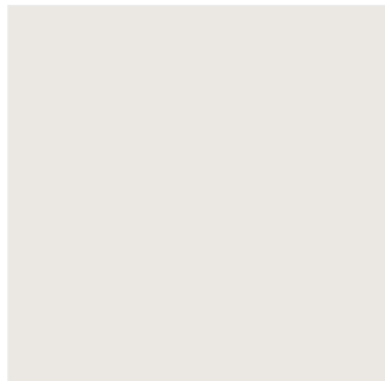
Available as
1860x4200 mm



3159



3239

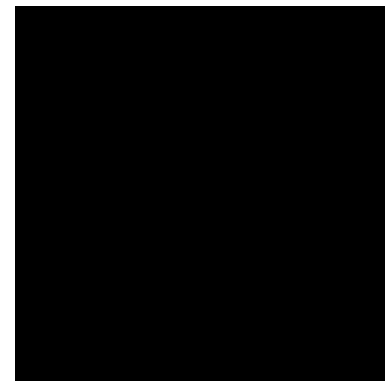


3240

Available as
1860x4200 mm



3260



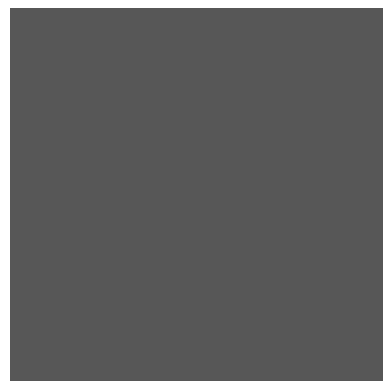
3190

Available as
1860x4200 mm



3156

Available as
1860x4200 mm



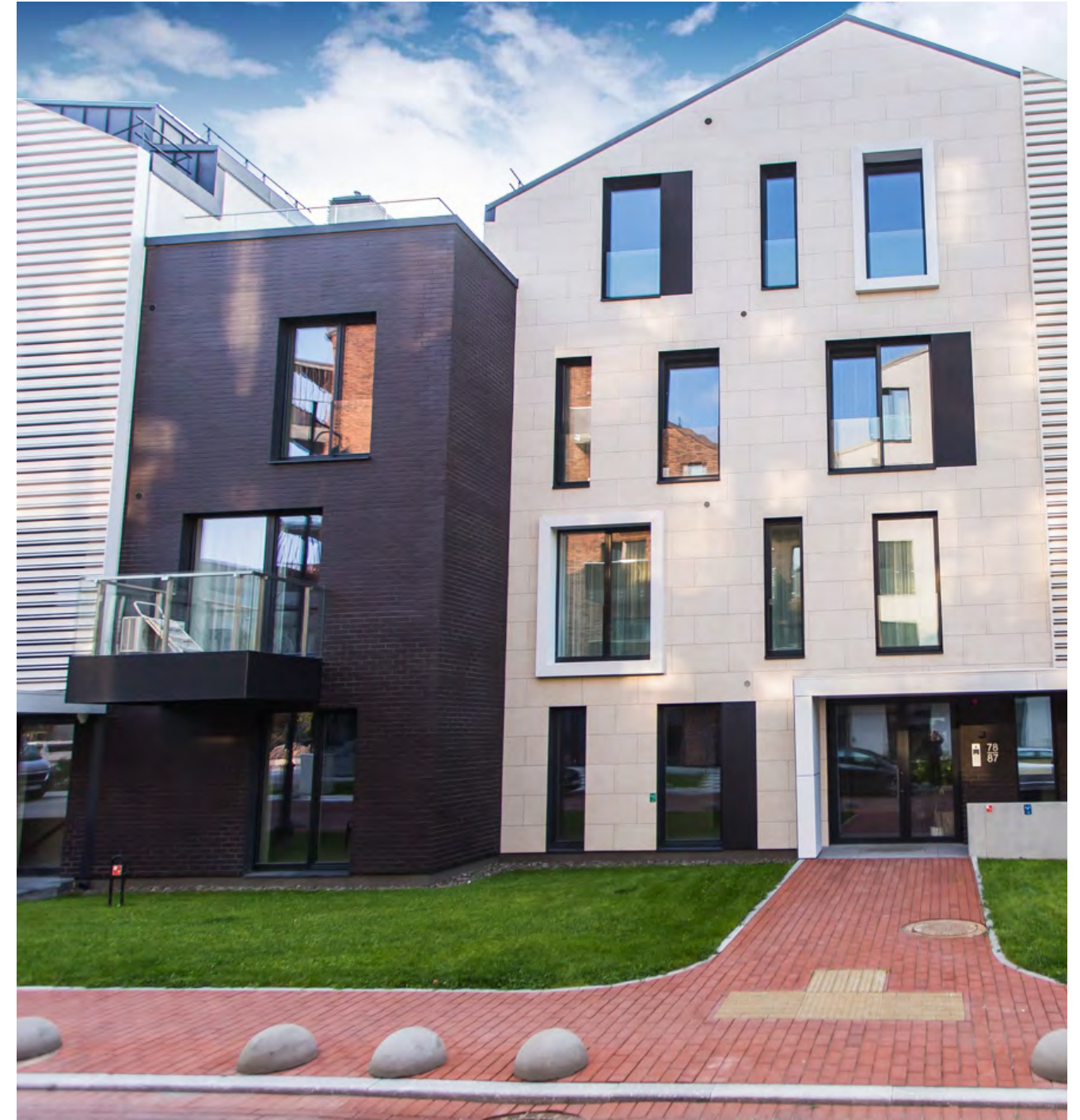
3155

Available as
1860x4200 mm



3168

Size: 1300x2800mm / 1300x3050mm / 1400x4200mm





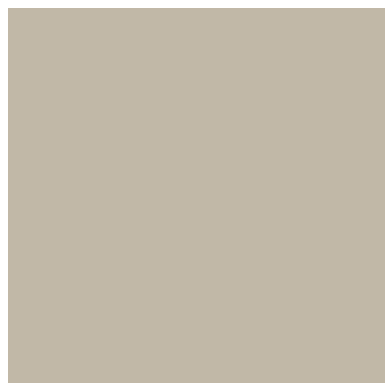
3163



3276



3251



3104

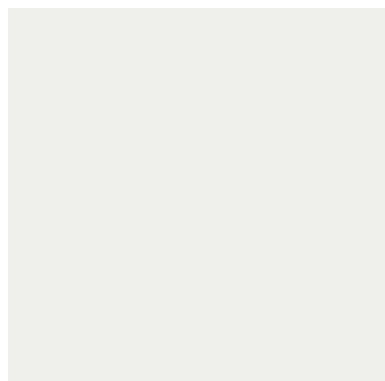
Available as
1860x4200 mm



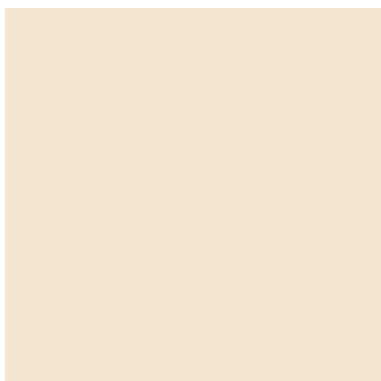
3148



3252



3296

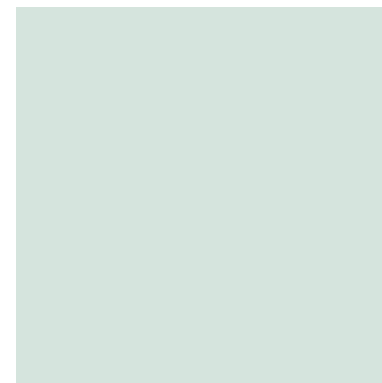


3167



3253

Available as
1860x4200 mm



3286



3285



3284



3281



3282



3246



3262



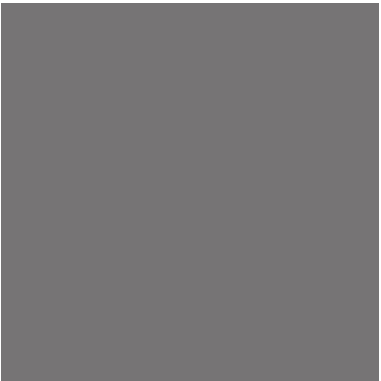
3137



3131



3297



3299



3291



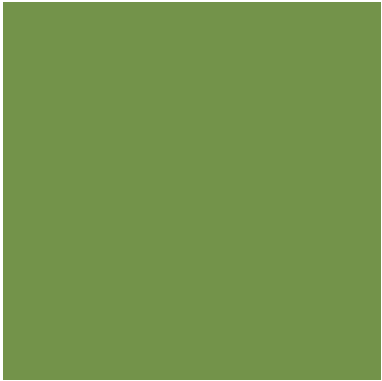
3292



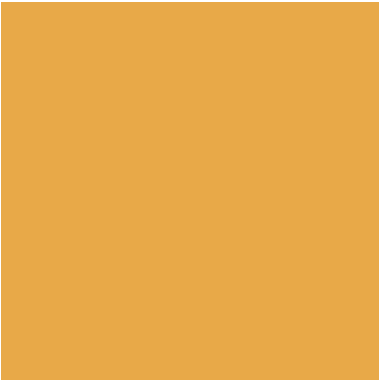
3238



3140



3300



3289



3127



3126



3158



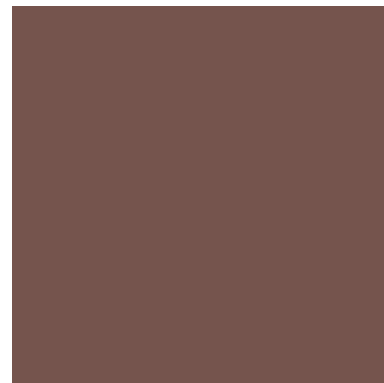
3116



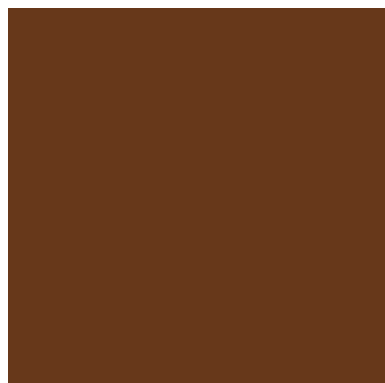
3274



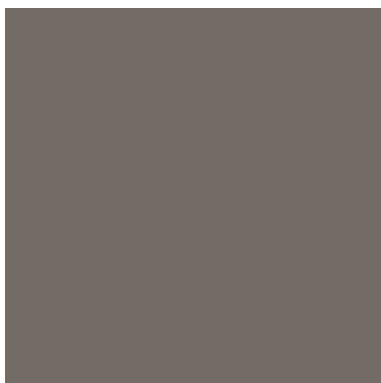
3245



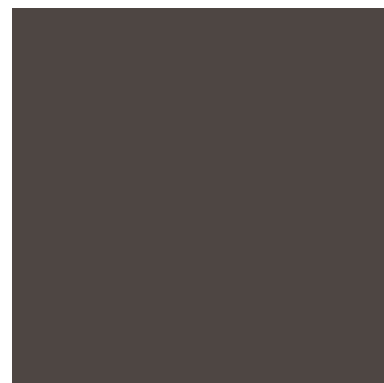
3278



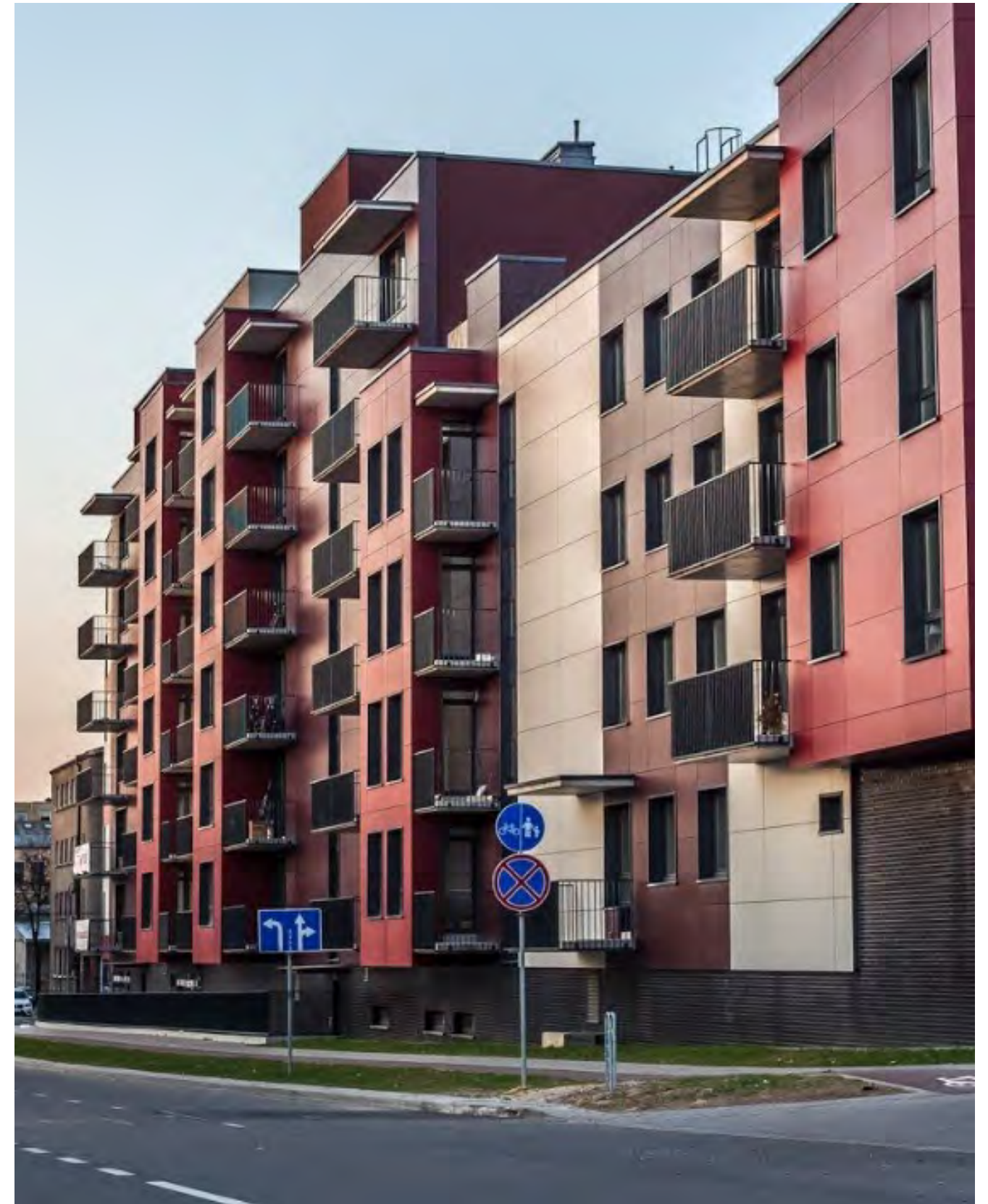
3164

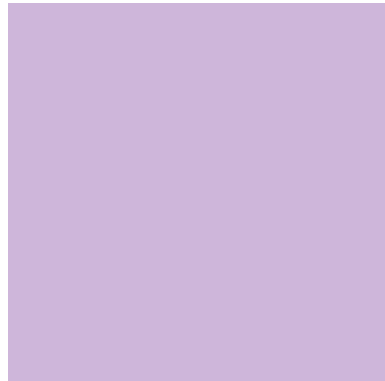


3242

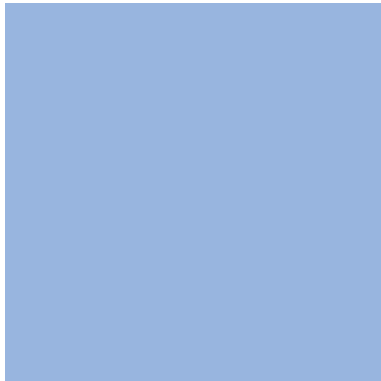


3294





3119



3134



3145



3288



3275



3279



3272



3169



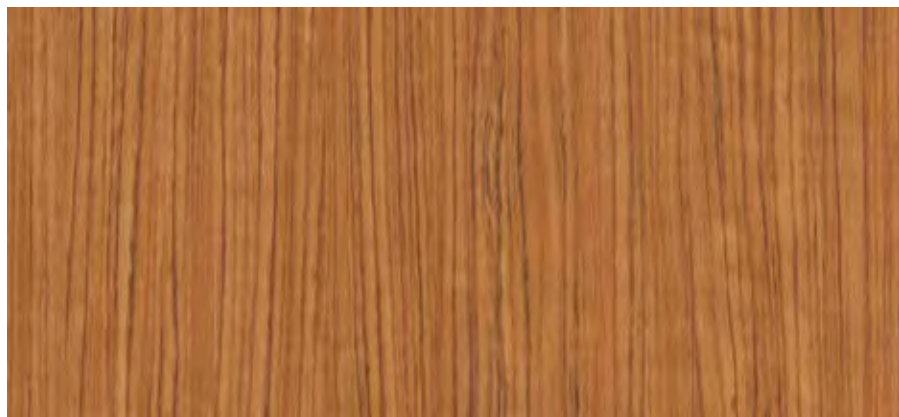


4220

Available as 1860x4200 mm



4270



4234

Available as 1860x4200 mm





4251

Available as 1860x4200 mm



4252



4258



4241



4248



4572

Available as 1860x4200 mm



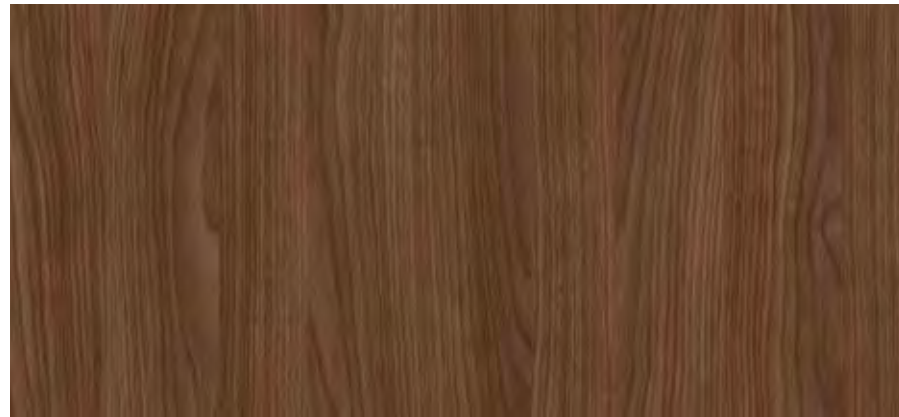
4257



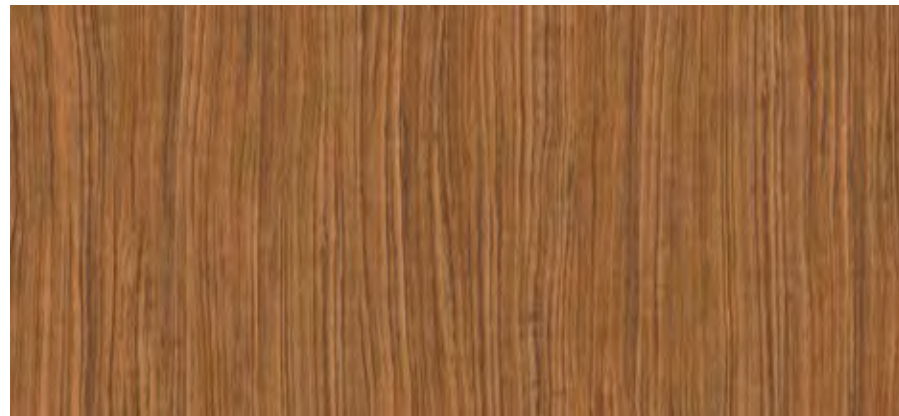
4281



4656



4271



4273



4274

Available as 1860x4200 mm

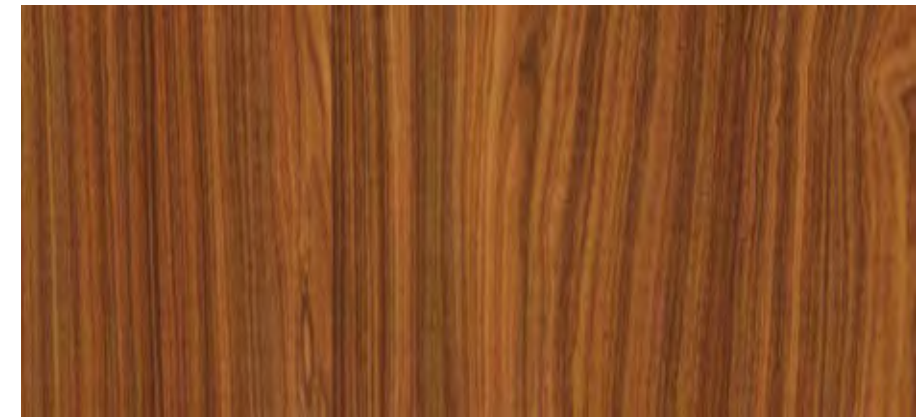


4389



4290

Available as 1860x4200 mm



4292

Available as 1860x4200 mm



4347

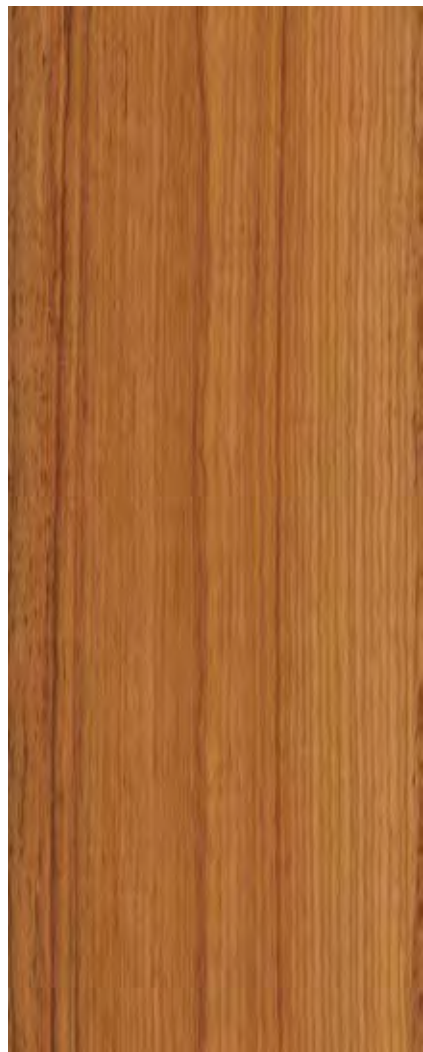


4479



4378

Available as 1860x4200 mm



4395

Available as
1860x4200 mm

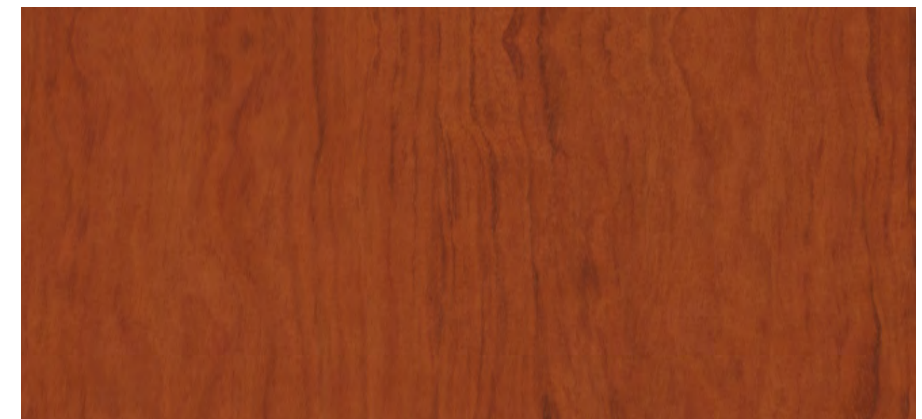


4394

Available as
1860x4200 mm



4530



4390



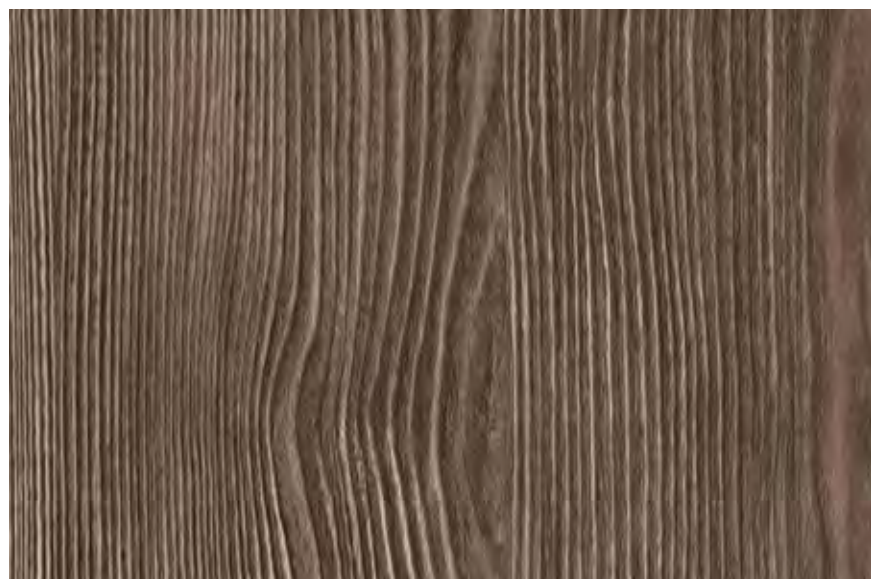
4391



4392



4509



4428



4510



4597

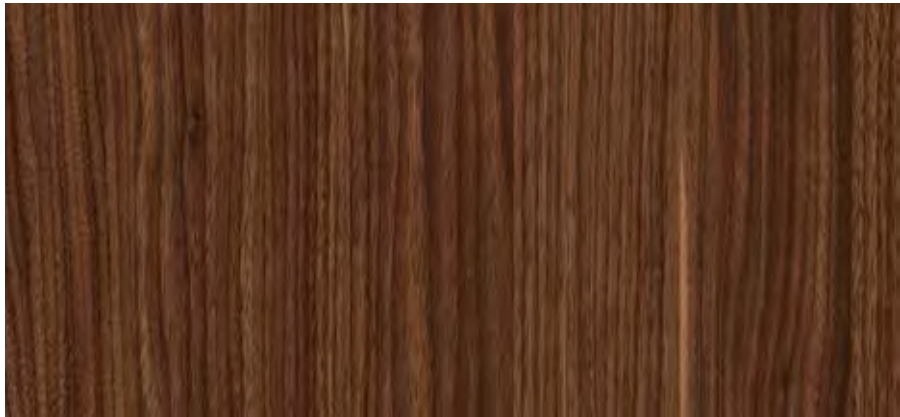


4598

Available as
1860x4200 mm



4484



4399

Available as 1860x4200 mm



4485



4518



4631



4570



4666

Available as
1860x4200 mm



4550



4551



4523

Available as 1860x4200 mm

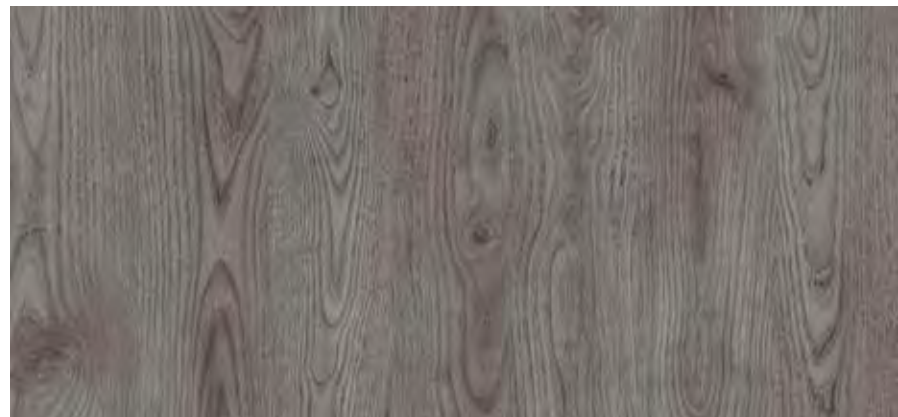


4565

Available as 1860x4200 mm



5649



4628



5672



4626



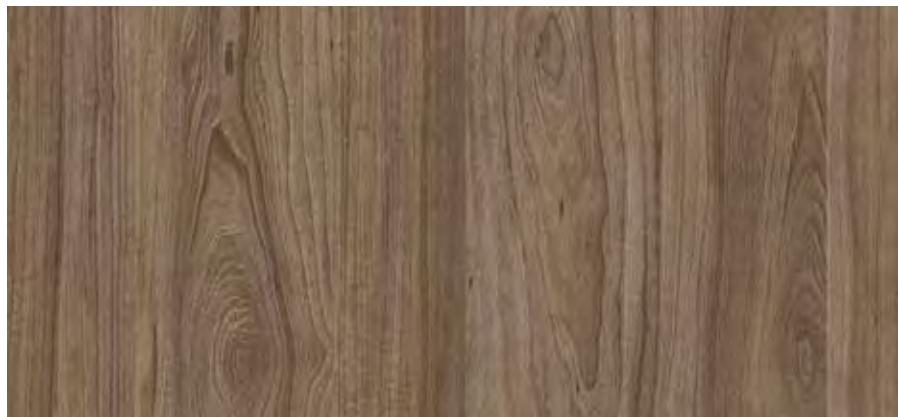
4627



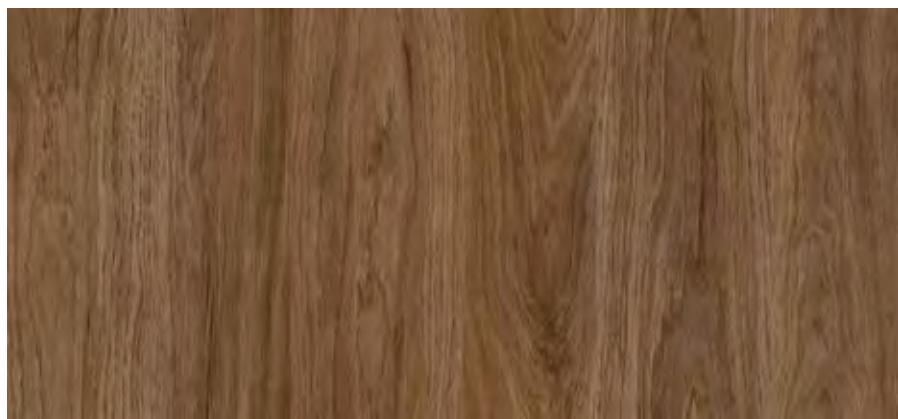
4552



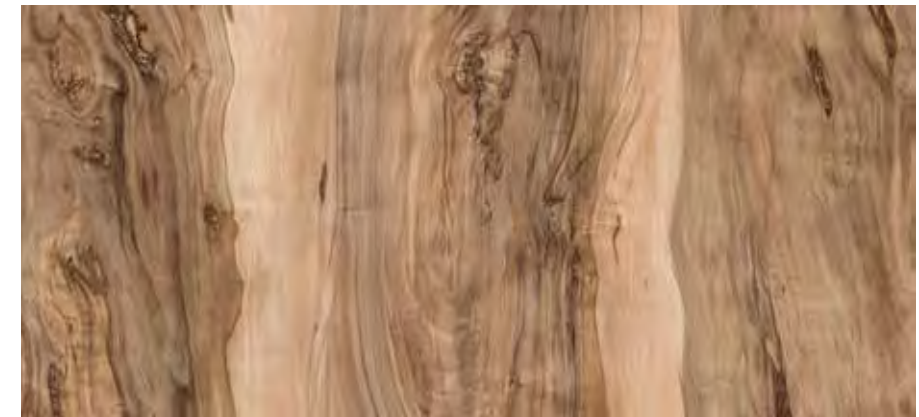
4655



4584



4657



4525

Available as 1860x4200 mm



4614

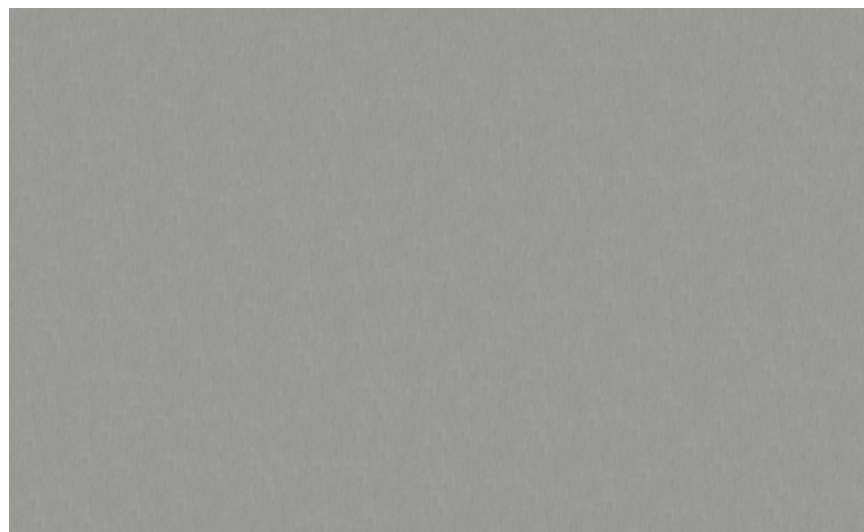
Available as 1860x4200 mm



5678



5576



5544



5628



5677



5646



5686





5635



5662

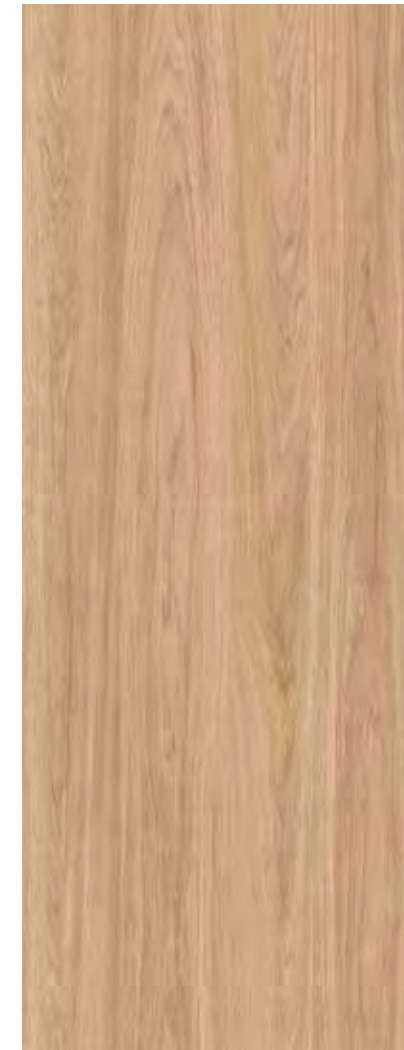


5634



4583

Available as
1860x4200 mm



4662



4632



5638



4348



4502





5419



5742



5663



5702



5687



5629

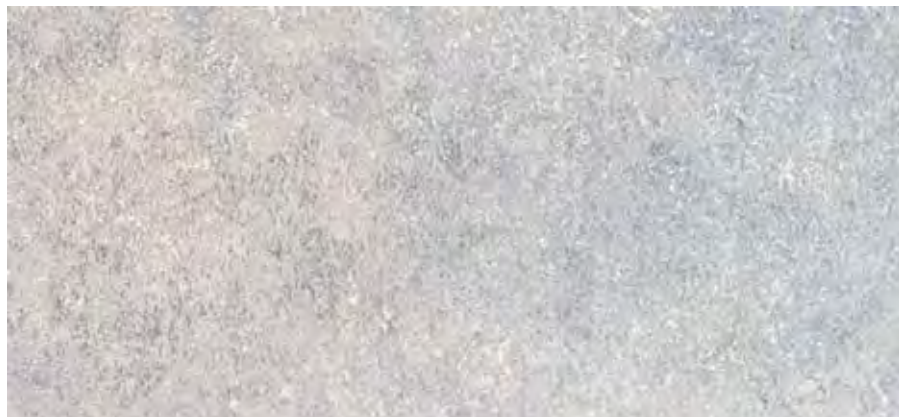


5630

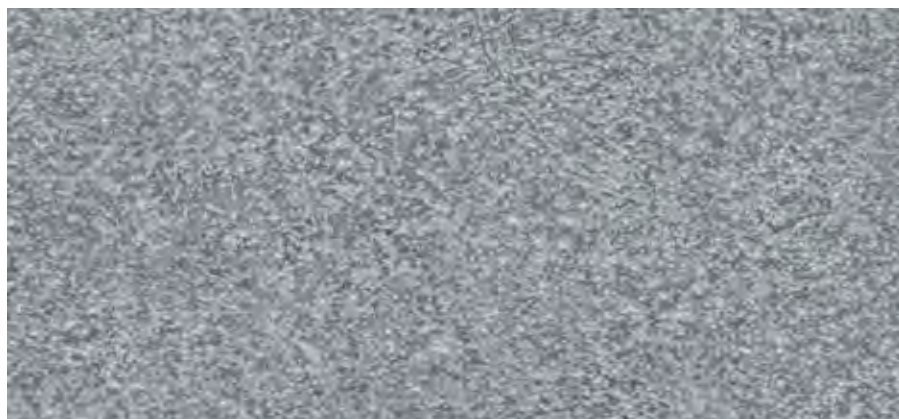
Size: 1300x2800mm / 1300x3050mm / 1400x4200mm



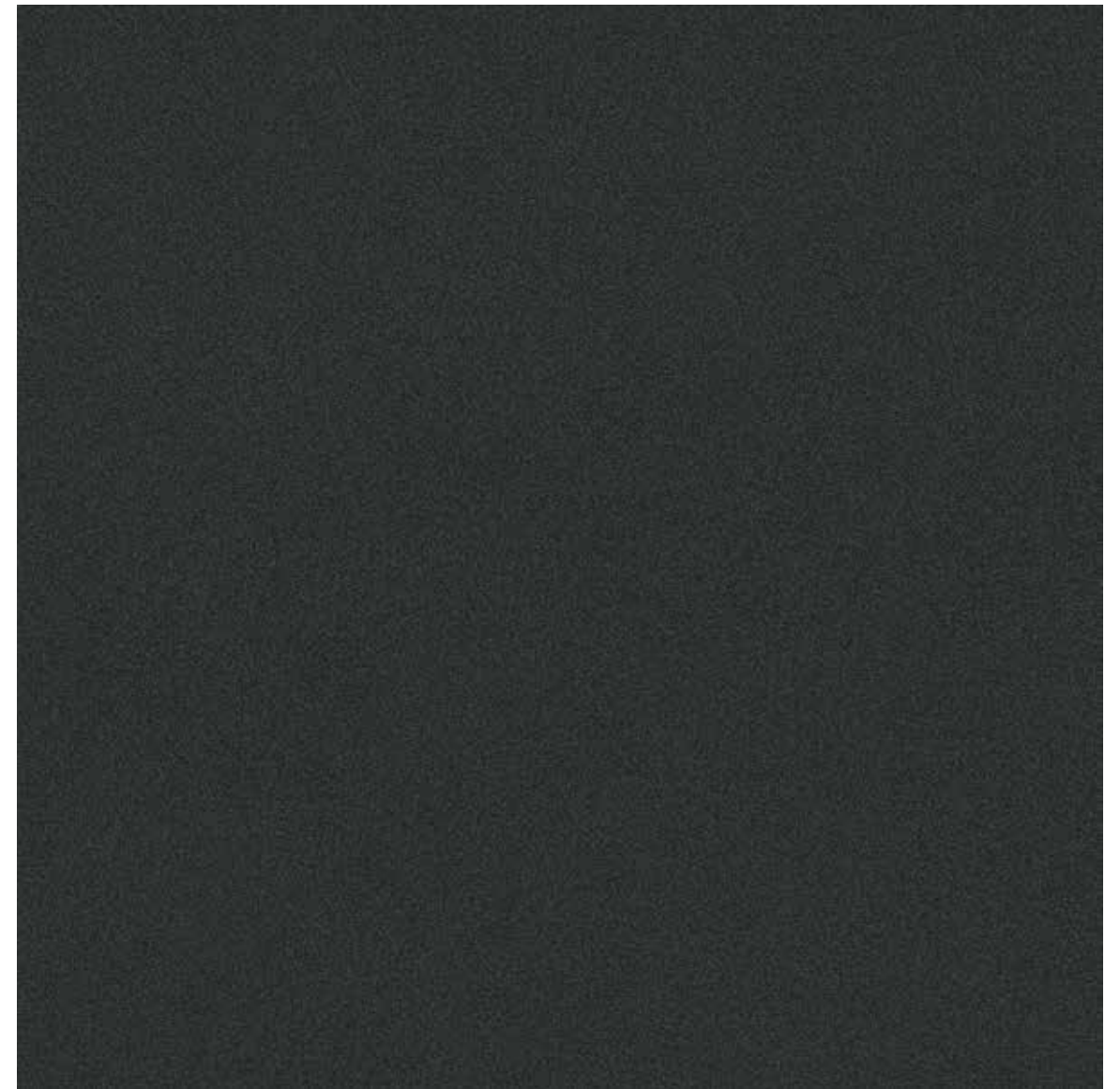
5689



5644



5690



5450



SURFACE DIMENSION CHART
NUMERICAL LISTING

1300x2800mm / 1300x3050mm				
	EXT	ALPINE	GRANITE STONE	PAGE
EBC	24241	X		19
	24248	X		18
	24279	X		18
	24290	X		17
	24292	X		17
	24389	X		15
	24390	X		13
	24391	X		13
	24392	X		13
	24399	X		20
	24525	X		20

1300x2800mm / 1300x3050mm				
	EXT	ALPINE	GRANITE STONE	PAGE
EBC	24530	X		12
	24531	X		9
	24532	X		12
	24533	X		10
	24534	X		10
	24535	X		10
	24657	X		19
	24658	X		8
	24659	X		8
	25628		X	15
	25629		X	14
	25630		X	14

1300x2800mm / 1300x3050mm				
	EXT	ALPINE	GRANITE STONE	PAGE
EBC	25678		X	14
	25683		X	7
	25685	X		5
	25686	X		5
	25687	X		5
	25689		X	6
	25690		X	6

1300x2800mm / 1300x3050mm / 1400x4200mm		
	VELUR - ESSE	PAGE
G-Uv+	3096	X 23
	3097	X 23
	3103	X 23
	3104	X 26
	3105	X 23
	3106	X 23
	3107	X 23
	3116	X 30
	3119	X 32
	3126	X 30
	3127	X 29
	3131	X 27
	3134	X 32
	3137	X 27
	3140	X 29
	3145	X 32
	3148	X 26
	3150	X 23
	3151	X 23
	3153	X 24
	3155	X 24
	3156	X 24
	3158	X 30
	3159	X 24
	3163	X 26
	3164	X 30
	3167	X 26
	3168	X 24
	3169	X 32
	3190	X 24
	3195	X 23
	3238	X 29
	3239	X 24
	3240	X 24
	3242	X 30
	3245	X 30
	3246	X 27
	3251	X 26
	3252	X 26
	3253	X 26
	3260	X 24
	3262	X 27
	3274	X 30
	3272	X 32
	3275	X 32
	3276	X 26

1300x2800mm / 1300x3050mm / 1400x4200mm		
	VELUR - ESSE	PAGE
G-Uv+	3278	30
	3279	32
	3281	27
	3282	27
	3284	27
	3285	27
	3286	27
	3288	32
	3289	29
	3291	29
	3292	29
	3294	30
	3296	26
	3297	29
	3299	29
	3300	29
	4220	34
	4234	34
	4241	38
	4248	39
	4251	36
	4252	37
	4257	40
	4258	37
	4270	34
	4271	42
	4273	42
	4274	42
	4281	40
	4290	43
	4292	43
	4347	45
	4348	66
	4378	45
	4389	43
	4390	47
	4391	47
	4392	47
	4394	46
	4395	46
	4399	51
	4428	48
	4479	45
	4484	50
	4485	51
	4502	66
	4509	48
	4510	49
	4518	51
	4523	55

1300x2800mm / 1300x3050mm / 1400x4200mm		
	VELUR - ESSE	PAGE
G-Uv+	4525	59
	4530	46
	4550	54
	4551	54
	4552	57
	4565	55
	4570	53
	4572	39
	4583	65
	4584	58
	4597	50
	4598	50
	4614	59
	4626	57
	4627	57
	4628	56
	4631	53
	4632	65
	4655	58
	4656	41
	4657	58
	4662	65
	4666	53
	5419	68
	5450	75
	5544	60
	5576	60
	5628	61
	5629	73
	5630	73
	5634	64
	5635	64
	5638	66
	5644	74
	5646	62
	5649	56
	5662	64
	5663	69
	5672	56
	5677	62
	5678	59
	5686	62
	5687	73
	5689	74
	5690	74
	5702	71
	5742	68

1860x4200mm		
	VELUR	PAGE
G-Uv+	3097	23
	3103	23
	3104	26
	3105	23
	3106	23
	3107	23
	3151	23
	3153	24
	3155	24
	3156	24
	3190	24

1860x4200mm		
	VELUR	PAGE
G-Uv+	4395	46
	4399	51
	4523	55
	4525	59
	4565	55
	4572	39
	4583	65
	4598	50
	4614	59
	4666	53

1860x4200mm		
	VELUR	PAGE
G-Uv+	3240	24
	3253	26
	4220	34
	4234	34
	4251	36
	4274	42
	4290	43
	4292	43
	4378	45
	4394	46

Our Certificates



ISO 14001: 2004 REGISTERED COMPANY
CERT. NO.: E2077



EN-438 CE

www.g-ext.com.tr

